

Please read and save these instructions. Read carefully before attempting to assemble, install, operate or maintain the product described. Protect yourself and others by observing all safety information. Failure to comply with instructions could result in personal injury and/or property damage! Retain instructions for future reference.

Action Barrel Pumps

Description

Action hand operated barrel pumps will deliver between eight ounces per stroke and sixteen ounces per stroke depending on your specific model. The pumps are designed to fit 3/4" and 2" threaded openings in 15, 30 and 55 gallon barrel and drums. Both pumps are also designed to fit 2 5/8" flexspout openings for 5 gallon pails. The extension tubes included reach the bottom of 55 gallon barrels. Model 6008 barrel pump is adjustable from 2, 4, 6 or 8 ounces per stroke. Model 6009 is adjustable from 4, 8, 12 or 16 ounces per stroke. Both pumps have polypropylene outer bodies and polyethylene inner parts. They are used for pumping water, water-based liquids and detergents.

Specifications

	6008	6009
Flow rate per stroke	8 ounces	16 ounces
Mounting	5 gal. flex 2 5/8"	2 5/8" flex
Inlet	1/2"	1/2"
Outlet	1/2"	1/2"
Bung Adapter	2" Polypropylene (PP)	2" (PP)
Suction Tube (Length & Material)	32" Polyethylene (PE)	32" (PE)
Packing Gland	PE	PE
Wetted Parts	PE & PP	PE & PP
SSU	SAE 40W Oil @ 70°F (about 4,000 SSU)	SAE 40W Oil @ 70°
Max. Temp.	140°F	140°F

General Safety Information

⚠ WARNING *It is the responsibility of the user to operate the pump in conformance with OSHA rules for dispensing liquids. Pump containers should be grounded when using with flammable liquids to avoid static electricity. Pump should be washed out before usage since processing lubricants could contaminate fluids.*

1. When using a hand pump (especially when pumping flammable, combustible or hazardous liquids) follow all electrical and safety codes, as well as the United States Occupational Safety and Health Act (OSHA), most recent National

Electrical Code (NEC), National Fire Protection, Inc. * (NFPA) Code 30 (Flammable and Combustible Code), NFPA 56A (Standard for use of Inhalation Anesthetics), NFPA 77 (Static Electricity), NFPA 78 (Lightning Protection Code), NFPA 80 (Standard for Fire Doors and Windows), NFPA 251 (Standard Method of fire Test of Building Construction), NFPA 704 (Identification of the Fire Hazards of Materials), other NFPA codes, local codes and ordinances, as needed in a particular application

2. Know the pump application, limitations, and potential hazards.

The "WARNING" statements indicate potential hazardous conditions for the operator or equipment. TAKE NECESSARY STEPS TO PROTECT PERSONNEL AND EQUIPMENT.

NOTE: Pump should only be used with liquids compatible with pump component materials. Consult PUMP CHEMICAL COMPATIBILITY CHART and PUMP SPECIFICATIONS. Also, the chemical supplier should be consulted regarding any questions of chemical compatibility, proper and safe use and handling of chemical. Misapplication of pump or use of noncompatible liquids will void warranty.

Action Barrel Pumps

General Safety Information (Continued)

▲ WARNING *In order to properly use this product, familiarize yourself with this pump and also with the liquid (chemical, etc.) that is going to be pumped through this unit. Although this pump is suitable for many liquids it is NOT suitable for all liquids!*

(*) Any of the NFPA Codes can be obtained from : National Fire Protection Association, Inc., Batterymarch Park, Quincy, MA 0269, telephone 1-800-344-3555. Write or call for listing and prices.

3. Pumping hazardous, flammable, or combustible liquids should only be done in buildings, rooms, or areas suited for this purpose. (See NFPA 30, NFPA 78, NFPA 80, NFPA 251, NFPA 704, other suitable NFPA codes, OSHA, insurance companies, local codes and ordinances.)

▲ WARNING *When filling cans, drums, etc. with combustible or flammable liquids, both container pumping from and container pumping to, should be bonded and grounded to dissipate possible accumulations of static electricity, and minimize sparks caused by static electricity (refer to NFPA 77 for specifics and further details).*

Removal of outer garments in work areas where there may be flammable or explosive liquids, which are ignitable with low electrical energy, can be fatal and/or cause property damage (refer to NFPA 56A, and NFPA 77, for further details).

4. The "WARNING" and instructions for gasoline below pertain not only to gasoline, but to any flammable, combustible or hazardous fluid.

▲ WARNING *Gasoline is a highly flammable fuel. The improper use, handling or storage of gasoline can be dangerous. Prevent accidents by following these safety rules:*

- a. Use gasoline only as a fuel, never as a cleaning fluid.
 - b. Use only an approved container to hold or store gasoline. Never store gasoline in familiar containers such as milk containers or soda pop bottles.
 - c. Store gasoline in a cool location, out of the reach of children. Never store gasoline near heat or an open flame.
 - d. Provide a fire extinguisher nearby when working with gasoline. Be sure extinguisher is in operating condition — check the pressure gauge or indicator. Be familiar with its proper use. Consult local fire department for the correct type of extinguisher for your application. Extinguishers rated ABC by the National Fire Protection Association are appropriate for most applications.
 - e. Provide positive shut-off valves on all permanent fuel supplies. Fuel lines must be of steel piping, adequately secured, and free from leaks.
 - f. Provide adequate ventilation, and clean up any spills when handling or pumping flammable liquids.
 - g. POSITIVELY NO SMOKING!
5. Do not use torches or apply fire or flame to this pump for any reason.
 6. Secure the discharge line before starting the pump. An unsecured discharge line will slip, possibly causing personal injury and/or property damage.
 7. Do not over tighten nonmetallic threaded fittings. One full turn past

hand tight is usually enough to prevent leakage. Teflon sealant tape should be used on all threaded joints, including the spout.

8. Check hoses for weak or worn condition before each use, making certain that all connections are secure.
9. Periodically inspect pump and system components. Perform routine maintenance as required.
10. Drain all liquids from the system before servicing.

▲ WARNING *Any pump used to transfer flammable liquids must be stored in a well ventilated area after use.*

11. Personal Safety

- a. Wear safety glasses at all times when working with pump.
- b. Wear a face shield, proper apparel and suitable respiratory equipment, when pumping hazardous chemicals.
- c. Keep work area clean, uncluttered, and properly lighted, replace all unused tools and equipment.
- d. Keep visitors at a safe distance from the work area.
- e. Make workshop childproof, with padlocks, master switches, and by removing starter keys.

▲ WARNING *Failure to follow all general safety information can result in a fatality, personal injury and/or property damage!*

Installation

1. Check to see if all parts are present.
2. Attach discharge spout (Ref. No. 15) using hose clamp (Ref. No. 20).

Models 6008 and 6009

Installation (Continued)

3. Join two lengths of extension tubing by using tube connector (Ref. No. 17) and two clamps (Ref. No. 20).
4. Attach extension tubing to (Ref. A) and secure with hose clamp (Ref. No. 10).
5. Insert pump into opening and hand tighten.
6. To adjust pump delivery, unscrew top grip (Ref. No. 1) and slide tubing (Ref. No. 9 or Ref. No. 11) over rod to limit pump stroke.
7. For various size drums, tubing (Ref. No. 18) can be cut to fit specific drum.
8. Entire pump head (Ref. No. 4) can be rotated to desired location; when operating the pump, you should stand to the side or in back of the spigot.

PAIL ADAPTER INSTALLATION

1. This adapter (Ref. No. 14) is designed to fit senior (metal ring) flexspout closures.
2. Screw adapter (Ref. No. 14) on male threads at bottom of pump (Ref. No. 13). Tightly secure adapter.
3. Remove cap on FLEXSPOUT closure and remove diaphragm (Ref. B). Insert tube extension into side, then snap over the other side.
4. To remove pump with adapter from pail, pull towards side of pail and snap off making sure to hold pail down.

Operation

1. The pump is now ready for operation. Liquids should begin flowing on second or third upstroke. If slight leakage should occur, simply tighten packing nut (Ref. No. 2) on top of pump.

NOTE: Tighten only enough to prevent leakage. Excessive tightening will damage the packing and cause more leakage.

2. When finished pumping, place cap (Ref. No. 16) on end spout (Ref. No. 15) to prevent dripping.
3. If pump is removed from drum, rinse thoroughly in liquid that is compatible with both the pump and fluid. For questions about chemical compatibility, contact your chemical supplier.

Maintenance

Normal maintenance is not required. If pump leaks at the top replace packing gland.

90-Day Limited Warranty

Action Barrel Pumps

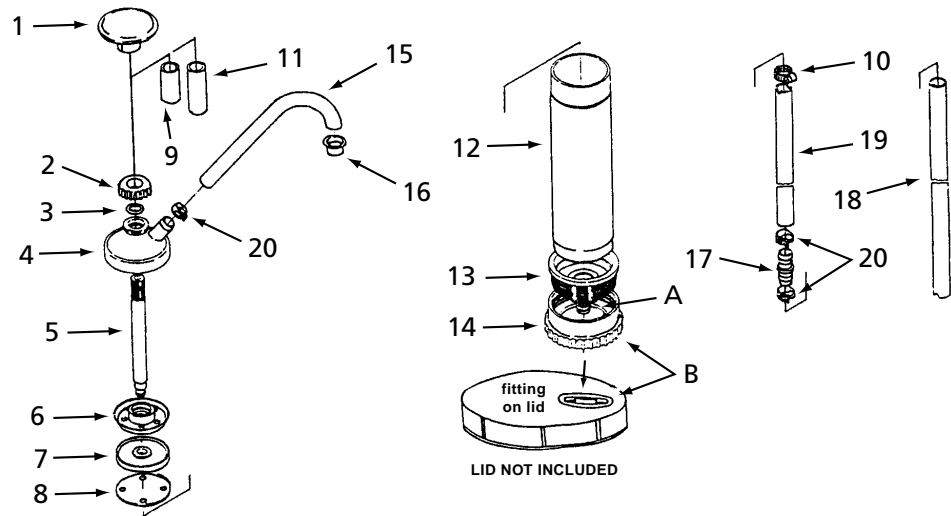


Figure 1 — Replacement Parts Illustration

Replacement Parts List

Reference Number	Description	Material	Part Number For Models:		Quantity
			Model 6008	Model 6009	
1	Grip	Polypropylene	6008-05	6009-05	1
2	Packing nut	Polyethylene	6008-06	6009-06	1
3	Packing gland	Viton	6008-14	6009-14	1
4	Cylinder cap	Polypropylene	6008-02	6009-02	1
5	Piston rod	Polypropylene	6008-07	6009-07	1
6	Piston	Polyethylene	6008-08	6009-08	1
7	Second valve	Polyethylene	6008-09	6009-09	1
8	First valve	Polyethylene	6008-10	6009-10	1
9	Restriction clip	Polyethylene	6008-19	6009-19	1
10	Tube clamp	Steel	6008-15	6009-15	1
11	Restriction clip	Polyethylene	6008-18	6009-18	1
12	Cylinder body	Polypropylene	6008-01	6009-01	1
13	Drum bung	Polypropylene	NA	NA	1
14	Adapter	Polypropylene	6008-258	6009-258	1
15	Discharge spout	Polyethylene	6008-13	6009-13	1
16	Spout cap	Polyethylene	6008-20	6009-20	1
17	Tube connector	Polyethylene	6008-17	6009-17	1
18	Dip tube	Polyethylene	6008-18	6009-18	1
19	Dip tube	Polyethylene	6008-19	6009-19	1
20	Tube clamps	Steel	6008-16	6009-16	3