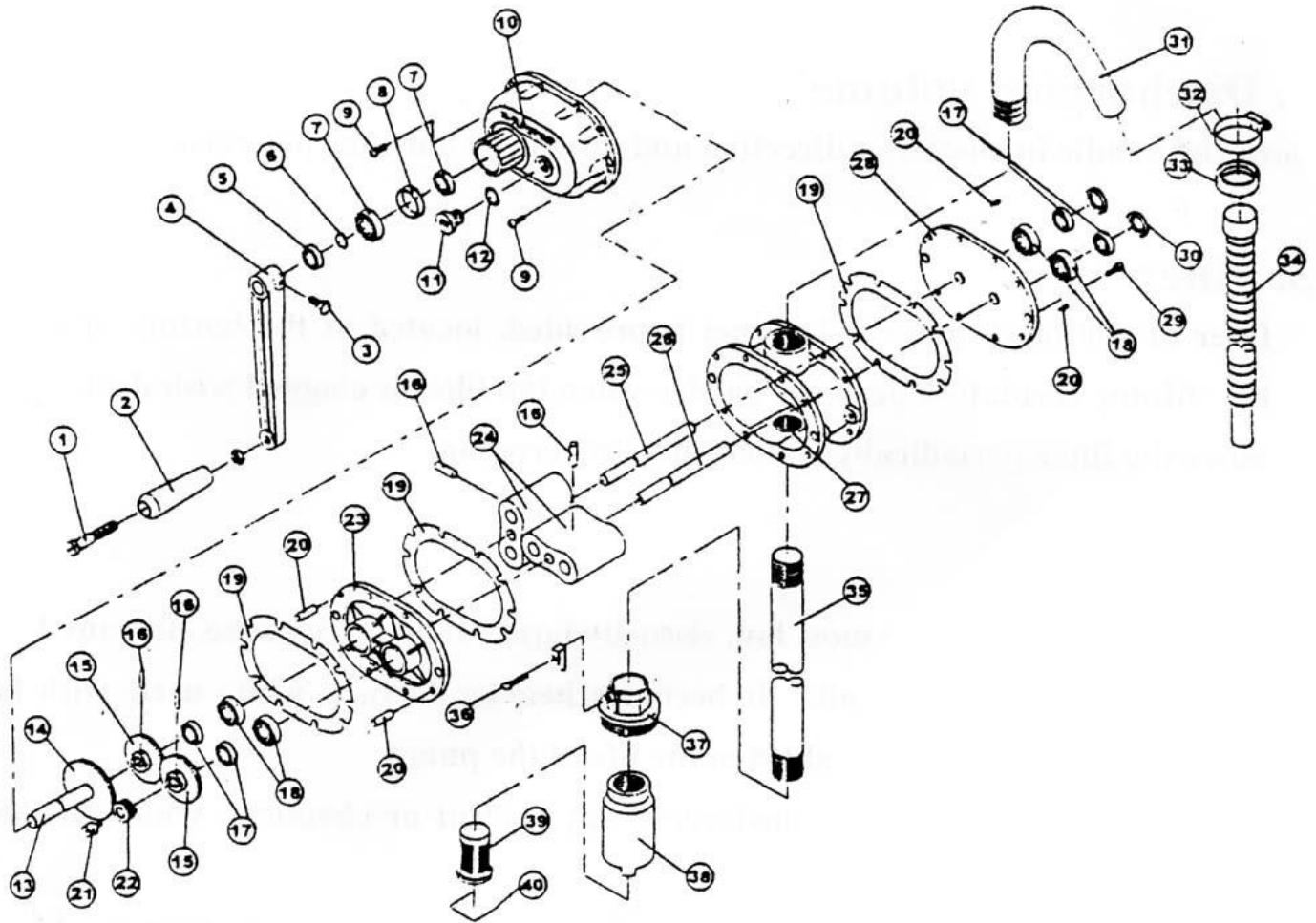


9005HT HIGH FLOW ROTARY PUMP



NO	PARTS	Q'TY	NO	PARTS	Q'TY
1	HANDLE RIVET	1	21	SCREW	1
2	HANDLE	1	22	PINION GEAR	1
3	HEXAGON BOLT	1	23	INSIDE COVER	1
4	CRANK ARM	1	24	ROOTS	2
5	OIL SEAL	1	25	ROOTS SHAFT	1
6	STOP RING	1	26	ROOTS SHAFT	1
7	BEARING	2	27	HOUSING	1
8	BEARING COLLAR	1	28	OUTSIDE COVER	1
9	SCREW	10	29	SCREW	10
10	GEAR COVER	1	30	BEARING CAP	2
11	RHOMBIC BOLT	1	31	SPOUT	1
12	O-RING	1	32	HOSE BAND	1
13	REINFORCEMENT SHAFT	1	33	RING	1
14	REINFORCEMENT GEAR	1	34	DELIVERY HOSE	1
15	TIMING GEAR	2	35	SUCTION PIPES (3)	1
16	PIN	4	•36	THUMB SCREW	1
17	OIL SEAL	4	•37	BUNG ADAPTER	1
18	BEARING	4	38	FILTER BODY	1
19	COVER PACKING	3	39	STRAINER	1
20	PIN	4	40	FILTER FOOT VALVE	1

• Parts are combined

HIGH FLOW PUMP

OPERATING INSTRUCTIONS

1. Lubrication

It's necessary to fill the gear cover with oil before using this pump. Fill with SAE 10 oil or equivalent lubricant up to the reference line through the lubrication bolt hole shown as below. As short lubricant can damage the gears, test and inspect the lubrication periodically can avoid troubles occur.

2. Discharging volume

Turn the handle in clockwise direction and discharge one liter per revolution.

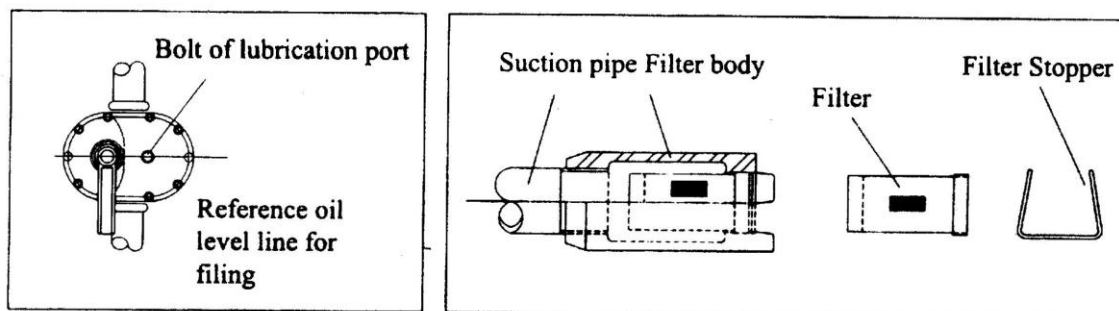
3. Filter

A filter of #60 mesh polyethylene net is provided, located at the bottom of suction pipe. Motor revolution becomes harder when the filter is clogged with dust.

Remove the filter periodically and clean with kerosene.

4. Caution

- a. The pump is suitable for most low viscosity liquid such as kerosene, unleaded petrol and low viscosity oil. It becomes heavier to turn while used with high viscosity liquid, which may shorten the life of the pump.
- b. Do not use this pump for transferring any solvent or chemical, which dissolves rubber.
- c. Do not pump and liquid containing dirt such as waste oil. Stained liquid may block the filter, prevent from discharging and damage the interior components.



TROUBLE SHOOTING

TROUBLE	REMEDY
Handle Fails to Turn	Gears Might be broken-Dirt or something clogging intake (Clean Pump/ fix broken parts) Used with wrong chemical-Pump is seized
Handle is Hard to Turn	No oil in gear box- Fill Oil Possible Dirt/debris- Clean unit/Filter may be blocked-Clean
Handle Turns but No Discharge	Gears Broken or Shaft or Shaft Pin- Repair.

