



Safety Through Vision

UXUEFT12HD : LCD Type **HD** Car Blackbox

HD Car BlackBox (3.5" Full LCD /GPS/G-Sensor / 1+1ch Camera/Audio)

UXUEFT12HD-HD : HD(Built-in) + HD(External Camera)

UXUEFT12HD-VGA: HD(Built-in) + VGA(External Camera)




Features

- 1+1CH HD & HD or VGA(1280x720 & 1280x720 or 720x480) display
- Built in LCD 3.5" Wide Monitor (Touch Screen)
- GPS/G-Sensor/Speaker/Audio
- PC Viewer program
- External GPS (Option)
- 106(L)x 14(W) x 64(H) mm

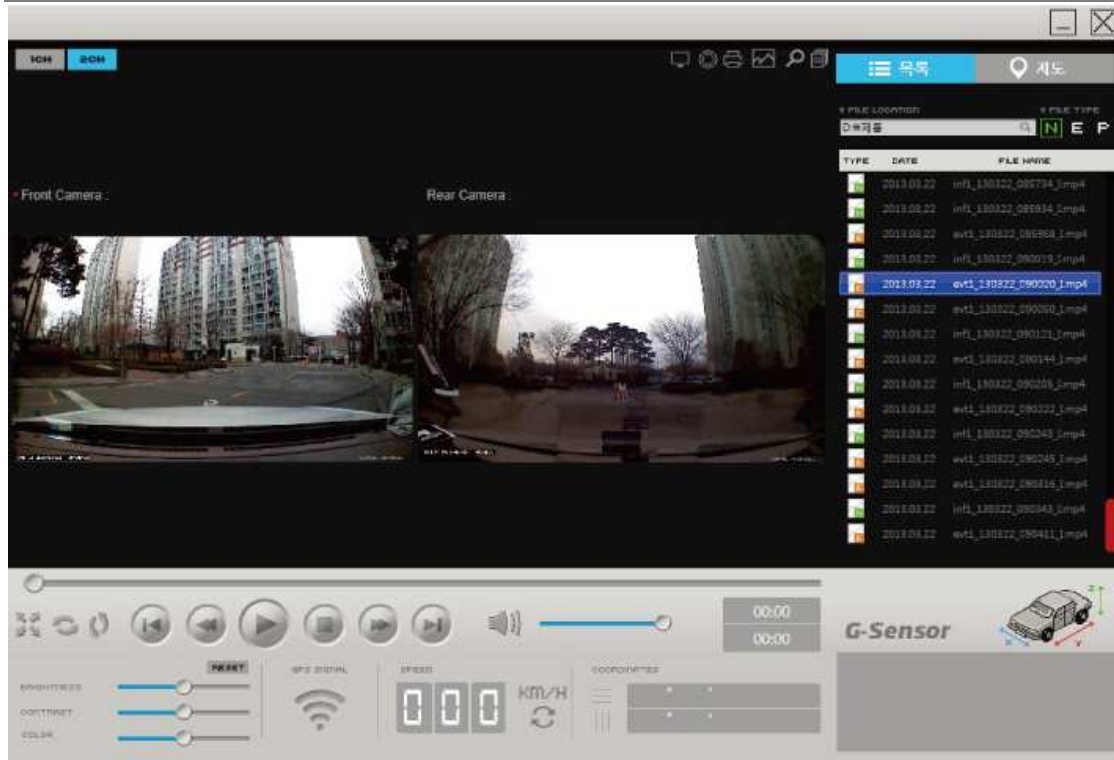
Specification

Model	Specification	remark
<p>(1+1ch) 3.5" Touch LCD</p> 	ARM Cortex A7 core	<p>external camera</p> 
	Resolution : HD 1280 x 720 (built in camera) HD 1280 x 720 or VGA 720x480 (External camera)	
	Front – 720P	
	External – 720P or VGA	
	GPS : External / Option	
	Built in 3D Shock Sensor	
	6 steps voltage setting function including disconnecting power (Cut-off function)	
	3.5" TFT with TSP (320x480) built in	
	Storage : (up to 64GB) Micro SD Card	
	Operating Temperature: -20℃ ~ 70℃	
	Keeping Temperature: -30℃ ~ 80℃	
	Compression : H.264 / PCM	
	Front - 30 FPS / External - 30 FPS	
	Size : 106(L)x 14(W) x 64(H) mm	
	Weight : 103g(Main body) / 132g(including bracket)	
	Built-in high sensitive microphone	
	Built-in speaker	
	High Temperature Cut-off Function	
	Recording Channel : 2 channel	
	Voice / beep announcement	
Event time : before 10sec / after 30sec		
DC Input, CAM Input, GPS Input, Micro SD Slot, On/Off Button		

External camera

Picture	Optional Camera	Specification
	External	High Quality HD CMOS Color minimal Camera
	Rear View	High Quality VGA Color minimal Camera
	Camera	Color : Black

Viewer Software



Dimension

